

WINTERLAND 2025

TECHNICAL SPECS MAINSTAGE

AUDIO

PA SYSTEM

Suspended passive line array system composed as following:

6x per/side K-Array KH-2P (Top cluster)

5x Sub K-Array KS5

1x K-Rack AMP

2x K-Array Kayman-KY102 (Frontfill)

FOH

Normally at the side of the stage, for concert will be placed in the FOH position approx. 11m from stage.

Allen & Heath SQ6

AMIX AFF-25 DB Meter

3x Cat 5e Cable from FOH to STAGE (one for audio and one for control+spare)

MONITOR SYSTEM

6x LD STINGER G3 12A Active Two-way stage monitor

MONITOR CONSOLE

Operator with Ipad (remote control of the FOH CONSOLE)

Ethernet switch for WiFi connection on stage

MICROPHONES

Kit Standard (sm58, sm57, DI Box, Kit drum Audix)

NOTE: Maximum average sound level: 93dB(A) LEQ 60 minutes at FOH. This will be measured and logged according to the national covenant. We expect sound engineers to respect this limit.

BACKLINE

There is no fix Backline in this venue. If needed can be asked and discussed with the tech resp. and the promoter.

LIGHT

Lighting console

GrandMA3 onPC
(if requested GrandMA3 Light)

Over the stage on the rig

- 6x Wash moving lights
- 1x Front Fresnel 1'000W
- 8x Moving Head Hybrid
- 6x Moving Head Beam
- 5x Stage Blinder
- 9x Flat PRO 12x9W RGBW
- 4x Stage Blinder BAR
- 1x Hazer fog

- Prolight ASTRA Wash7Pix*
- DTS Scena 650/1000*
- Prolights Astra Hybrid 330*
- Cameo Azor B1*
- Blinder LED SunRise 2IP*
- Prolights LumiPar 12IP*
- Showtec Sunstrip Active Stage Blinder*

For the venue on the rig over the bar

- 6x Wash moving lights
- 8x Bar RGBW LED BAR

- Prolight ASTRA Wash7Pix
- Lumipix 15IP

VIDEO

Wall LED of 5x3m p. 3.9 suspended on the back of the stage. Controller on the side of the stage. An HDMI can be run from the FOH. If needed please inform us in advance.

STAGE

10m00 (w) x 8m00 (d) x 1m00 (h) with a clearance of 5m00

RIG

LITEC Libera FL52 rig 10m00x8m00

CONFIRMATION:

With their signature, the management confirms their awareness of the technical equipment provided by the venue and the in-house service. Any additional requests beyond what is provided must be submitted and approved before signing the contract and this technical specification sheet.

Notes:

.....

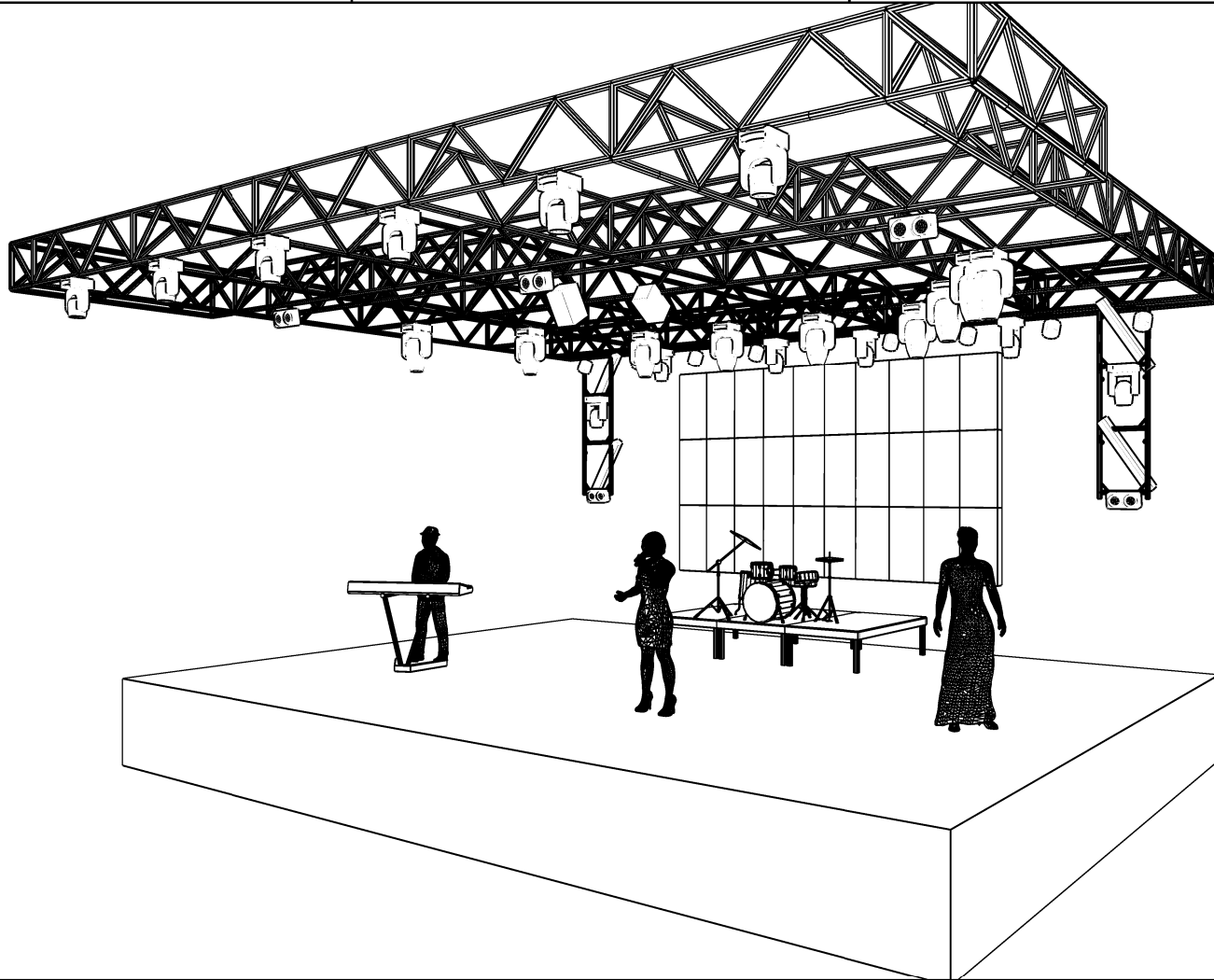
Date

Signature

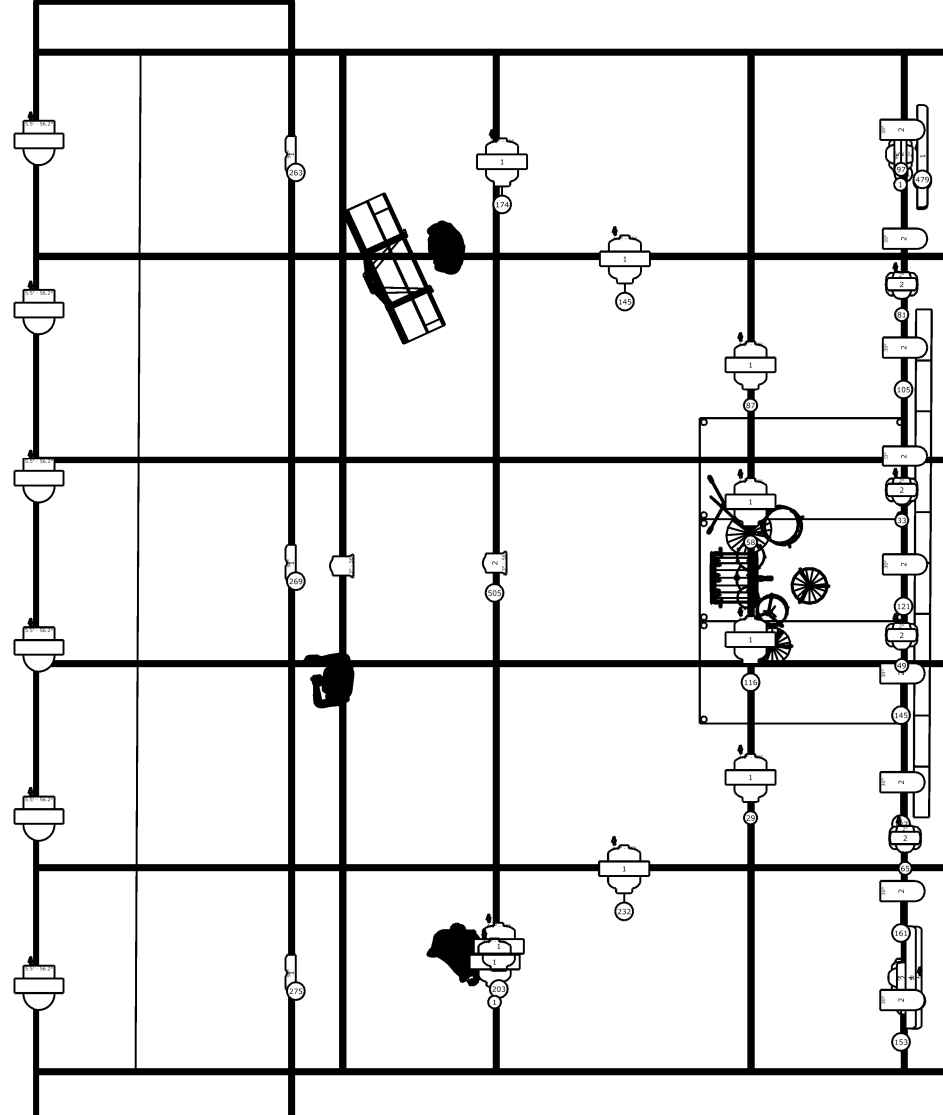
.....

.....

Plot - Perspective view Winterland 2025



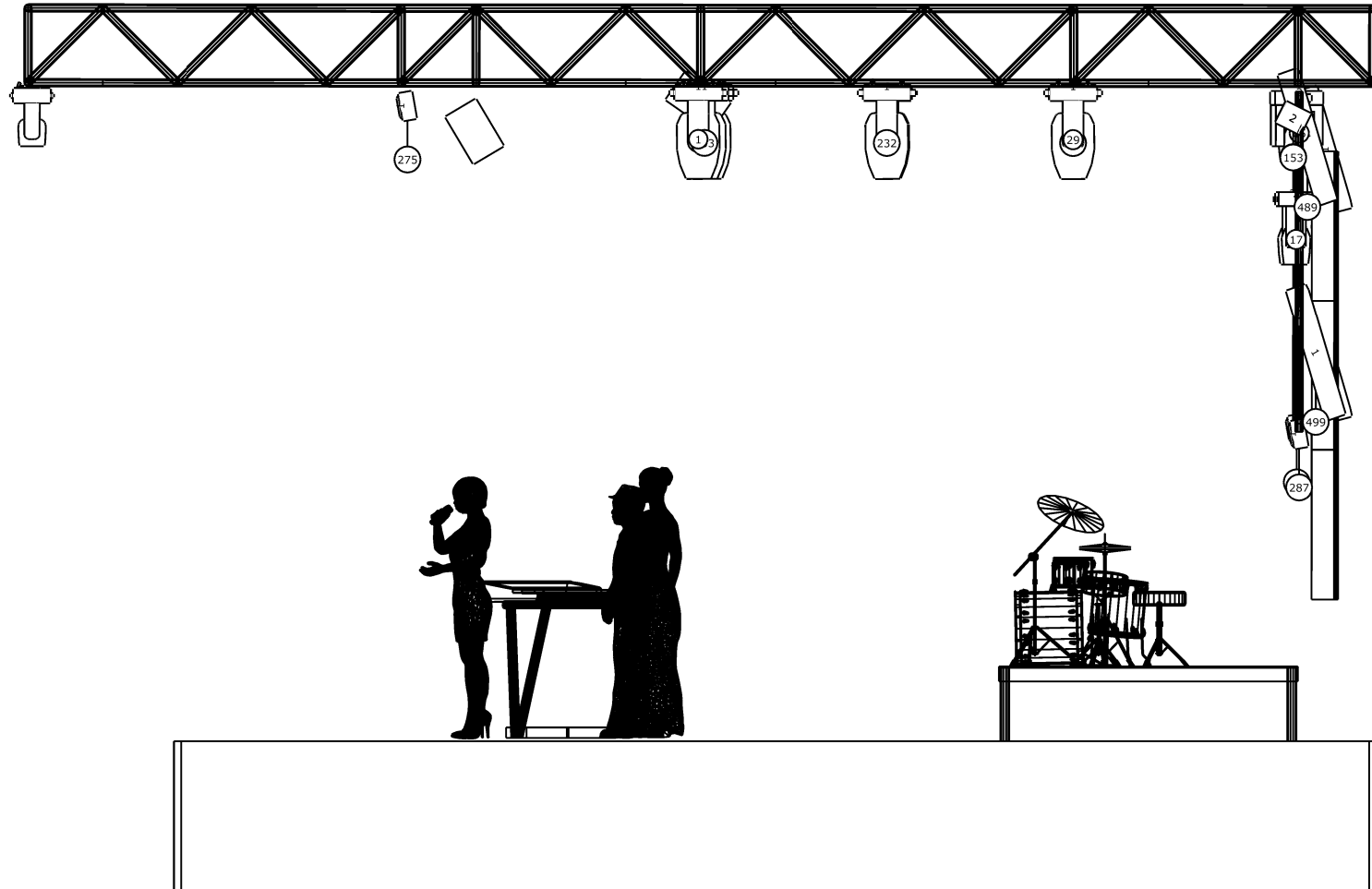
Nome Progetto Winterland 2025			
Sito Del Progetto Piazza grande Locarno			
		Data Progetto dicembre 25 - gennaio 26	
Nome Cliente Enjoy Arena			
Autore Disegno Evolution Events Sagl - Enea G.		Versione Disegno 1	Indicazione Nome Del File WLAND24_Progetto_tecnico.c2p
		Indicazione Nome Documento	



Nome Progetto Winterland 2025		data Progetto dicembre 25 - gennaio 26	
Sito Del Progetto Piazza grande Locarno		Nome Cliente Enjoy Arena	
Autore Disegno Evolution Events Sagl - Enea G.		Versione Disegno 1	Indicazione Nome Del File WLAND24_Progetto_tecnico.c2p
		Indicazione Nome Documento	

Plot - Side view

Winterland 2025



Nome Progetto Winterland 2025			
Sito Del Progetto Piazza grande Locarno		Data Progetto dicembre 25 - gennaio 26	
Nome Cliente Enjoy Arena			
Autore Disegno Evolution Events Sagl - Enea G.		Versione Disegno 1	Indicazione Nome Del File WLAND24_Progetto_tecnico.c2p
		Indicazione Nome Documento	